

# HOUSE & GARDEN

JUNE  
2009  
£3.70

THE DEFINITIVE GUIDE TO STYLISH LIVING

## RICH MIX

STYLISH  
HOUSES AT  
HOME AND  
ABROAD

A CREATIVE  
VENETIAN  
LIFESTYLE

DAN PEARSON  
REWORKS A  
CLASSIC  
COTSWOLDS  
GARDEN

# 100 LEADING INTERIOR DESIGNERS

WHO ARE THEY AND  
WHAT'S THEIR STYLE?  
FIND OUT IN OUR  
EXCLUSIVE DIRECTORY

PLUS  
SHOPPING FOR  
ALFRESCO  
ENTERTAINING

9 770043 575186  
062





MARK AND PENNY STEINBERG



DAVID SMALLRIDGE AND HELEN FIFIELD



JAMIE CULLUM



MARTIN BRUDNIZKI AND JINNY BLOM



TRICIA GUILD



JOHN MINSHAW AND DIANA SIEFF



LIZ JEANS AND TERENCE DISDALE



PENNY MORRISON AND CHESTER JONES



DAVID GREEN, SIMON JEFFREYS AND NICHOLAS COLERIDGE



KELLY HOPPEN, SUSAN CREWE AND MICHAEL PRIEST

## Party page by Petra Kenyon

# Hitting the right note

Jazz musician Jamie Cullum enthralled guests at the Designer Dinner during London Design Week 2009, which was hosted by *House & Garden* editor Susan Crewe, publishing director Claire German and managing director of Design Centre Chelsea Harbour, Helen Fifield. After the guests - featured in *House & Garden's* directory of leading interior designers in this issue - had enjoyed Champagne and cocktails in the Design Club, and a dinner, created by Absolute Taste, in the North Dome, which was decorated with coral-themed fabrics, shells and flowers by Rob Van Helden, Cullum gave a rousing piano performance in the South Dome - transformed into a cocktail bar. The other surprise of the evening was the presentation of a specially commissioned Theo Fennell charm bracelet to Kelly Hoppen in recognition of her recently awarded MBE for services to interior design.



NICHOLAS COLERIDGE AND LULU LYTLE



LIZ ELLIOT AND PETRA KENYON



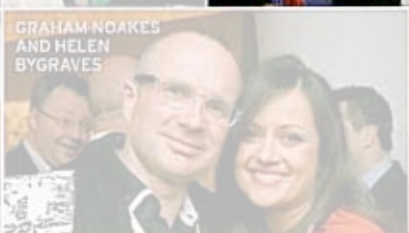
GORDON SCOTT, DICKIE BANNENBERG AND JANE SIEBERTS



CLAIRE GERMAN AND WILLIAM YEOWARD



RON DENNIS AND LIZ JEANS



GRAHAM NOAKES AND HELEN BYGRAVES



LAVINIA BOLTON



TARA BERNARD, TOM BARTLETT AND SUZY HOODLESS



WENDY NICHOLLS AND BILL BENNETT



EMMA BURNS AND DAVID OLIVER



GEORGE KHACHFE