

SPRING 2015

£4.50 \$10

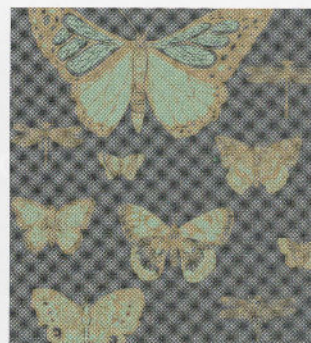
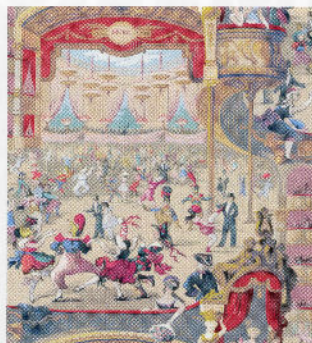
BRIDGE FOR DESIGN



THE INTERNATIONAL RESOURCE FOR INTERIOR DESIGNERS



This new chandelier from **Lladró** is certainly something out of a children's fairytale book. It is part of the aptly named Winter Palace collection which was launched at Maison et Objet earlier this year. It is adorned with hundreds of porcelain beads and teardrops while engraved lithophanes replace traditional fabric lampshades. www.lladro.com



WHIMSICAL is a nostalgic and enchanting selection of magical wallpapers from **Cole & Son** which are inspired by classic childhood stories and fairy tales. The 15 designs include whales riding waves of far flung oceans, ethereal lantern bearing fish suspended in strange underwater worlds, starlit forests, shimmering dragonflies and harlequinned merry-makers, all offering a compendium of true conversation pieces, while bringing the charm of children's theatre, pageantry and literature to life. www.cole-and-son.com

THE LATEST from the collaboration between **Linley** and **Summit** includes this handsome adjustable chaise longue. The Linley for Summit collection is a sophisticated range of outdoor furniture made from the finest plantation-grown teak. www.summitfurniture.com



BENCHMARK

benchmarkfurniture.com